



Motor Quality Bearing V2,V3,Z3V3,Z4V4, EMQ  
grade bearing and other All kind of bearings



**KAZI BEARING**  
PRODUCTS HANDBOOK

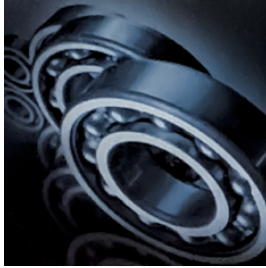
**PRODUCT CATALOGUE**

[www.kazibearing.com](http://www.kazibearing.com)

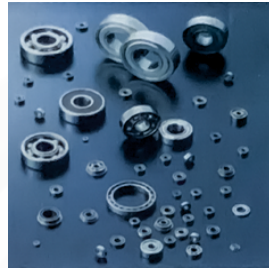
## Introduction

- KAZI Bearing specializes in import & manufacturing various high - quality bearings and related products committed to becoming the benchmark for International bearing companies. KAZI provides optimal solution with advanced & applicable technology, consistent & reliable bearing products, & professional & comprehensive services to costumers.
- KAZI Brand was established on May 16, 2014, with a product range that includes spherical roller bearings, cylindrical roller bearings, tapered roller bearings, thrust spherical roller bearings, deep grove ball bearings, and angular contact ball bearings, slewing bearings, and related parts from primary metals, mining, off-highway, paper to cement, crane,atta maker,electric motor, textile machine, printing, medical equipment,rolling mills,pipe industries and elevator. Customers in these essential industries all around the world, have acknowledged KAZI.
- In order to ensure the quality consistency of KAZI Bearings products. the company continues to invest in advanced equipments and metrelogy instruments. all KAZI bearings products are made from approved premium raw materials with lean manufacturing meanwhile.

## Products We Are Offering



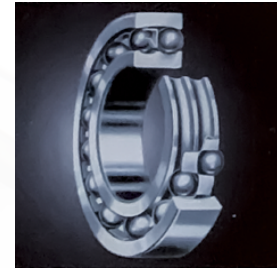
**Deep Groove Ball Bearings**  
(SERIES INCLUDES  
6000,62,..63,..ZZ/2RS/SS..ETC)



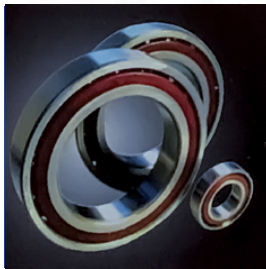
**Miniature Ball Bearings**  
(SERIES INCLUDES  
604,624/68/69/ZZ/2RS/SS..ETC)



**Taper Roller Bearings**  
(SERIES INCLUDES  
3020..3030..3022..3230..ETC)



**Self Aligning Ball Bearings**  
(SERIES INCLUDES  
12,13,22,23....ETC)



**Precision Angular  
Contact Bearings**  
(SERIES INCLUDES  
7000,720..730..P4/P5,BSB..ETC)



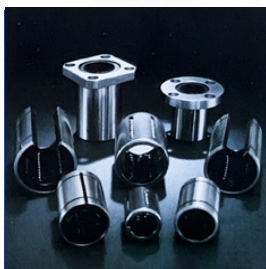
**Drawn Cup Needle  
Roller Bearings**  
(SERIES INCLUDES  
HK,HKRS,2RS,BK,BA,BHA,  
BAM,TA..ETC)



**Stud and Yoke Type Track  
Roller Bearings**  
(SERIES INCLUDES CF..V..B..UU,CR,  
CRH..UU,NUKR,NAST,RNAST,ZZ,  
UU,NA/RNA22..2RS/NATR,NATV..  
PP/CRY..UU/NUTR,X.ETC))



**Rod End Bearings**  
(SERIES INCLUDES  
PHS,POS,PHSB,POSB..R/  
L,PB,LHSA,EC,GAR,  
GAL<..ETC)



**Linear Motion Bearings**  
(SERIES INCLUDES  
LM,LME..UU..L/AJ/OP/LMF-L/LMK-L/  
LMEF/LMEK/KH,KH..PP..ETC)



**Radial Spherical  
Plan Bearings**  
(SERIES INCLUDES  
GE.,ES,ES2RS,GE-FO,GE-UK,  
GE-HO,GELO,GE-FW..ETC)



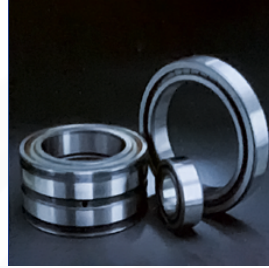
**Permaglide Dry Bush**  
(SERIES INCLUDES  
PAPP10,P20,PAF,WC,&  
DU BUSHSTRIPS..ETC)



**One Way Clutch**  
(SERIES INCLUDES CSK,CSK-K,  
CSKKK,NSS,NFS,B200, & BWC/DC  
RACHET CAGES..ETC)



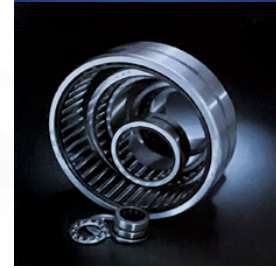
**Spherical Roller Bearings**  
(SERIES INCLUDES  
212,213,222,223..ETC)



**Cylindrical Roller Bearings**  
(SERIES INCLUDES  
NU,N, NJ, NUP,NN, NNU,SL04, SL  
1829, SL 1830, SL01, SL02, SL 19..  
ETC)



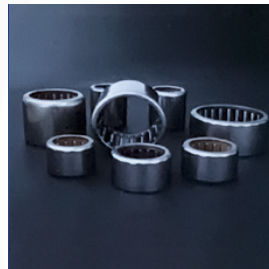
**Thrust Ball Bearings**  
(SERIES INCLUDES 511,  
512,513..ETC)



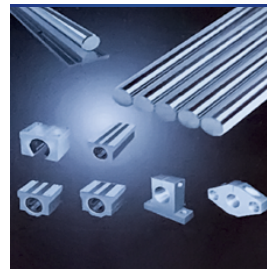
**Machined Type Needle  
Roller Bearings**  
(SERIES INCLUDES NA,RNA..  
UU 48/49/69,NK,NKI,  
NKIA, NKIB,NKS,NKIS,NKX-  
NKXR,Z,BR,NAF,NAFW.ETC)



**Thrust Needle  
Roller Bearings**  
(SERIES INCLUDES 811,812,893,  
894,GS,WS,LS,AXK,AS, NTA, TRA,  
TRC, TRD.ETC)



**Drawn Cup  
Needle Roller Clutches**  
(SERIES INCLUDES  
HF,HFL,RC,RCB.ETC)



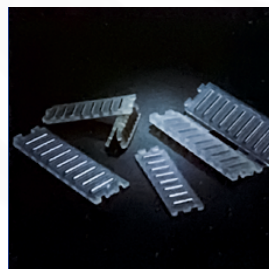
**Linear Motion Shafts  
with Support**  
(SERIES INCLUDES KCS,ST, SC,  
SC UU OP, SC LUU OP, SK.ETC)



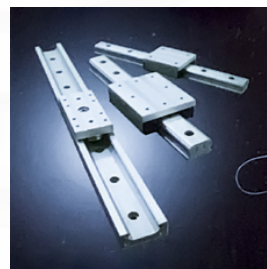
**Needle Roller and Cage  
Assemblies**  
(SERIES INCLUDES K,K..ZW.ETC)



**Track Roller Bearings**  
(SERIES INCLUDES  
LR/LFR 200,600,50/8,5200,5300  
INPPU/KDDU.ETC)



**Flat Roller Cages**  
(SERIES INCLUDES FF,FF..ZW)



**Dual Shaft Guides**  
(SERIES INCLUDES TPS..ETC)



**Pillow Block Bearings**  
(SERIES INCLUDES UCPUCF,UCT,  
UCFLUCPX,UCFX,UCT.ETC)

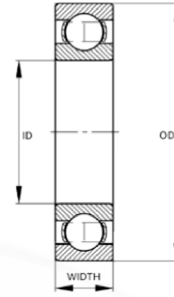
## Index

1.	Bearings Noise And Vibration Chart	Pg 5
2.	Single Row Deep Groove Ball Bearings	Pg 6
3.	Miniature Series	Pg 7-8
4.	Double Row Self-aligning Ball Bearings	Pg 9
5.	Single Row Angular Contact Ball Bearings	Pg 10
6.	Double Row Angular Contact Ball Bearings	Pg 11
7.	Single Row Cylindrical Roller Bearings	Pg 12-13-14
8.	Tapered Roller Bearings	Pg 15-16
9.	Double Row Spherical Roller Bearings	Pg 17-18
10.	Single Thrust Ball Bearings	Pg 19-20
11.	Spherical Roller Thrust Bearings	Pg 21
12.	Pillow Blocks	Pg 22

## Bearing Noise and Vibration Chart

Bearing Inside Diameter	Single Bearing Noise dB												Single Bearing Vibration m/s																			
	Diameter series 6000				Diameter series 6200				Diameter series 6300				V			V1			V2			V3			V4							
	Z	Z1	Z2	Z3	Z4	Z	Z1	Z2	Z3	Z4	Z	Z1	Z2	Z3	Z4	L	M	H	L	M	H	L	M	H	L	M	H	L	M	H	L	M
5	37	36	34	30	26	38	37	34	32	28	39	37	35	33	29	110	72	60	74	48	40	58	36	30	35	21	18	32	11	11		
6	37	36	34	30	26	38	37	34	32	28	39	37	35	33	29	110	72	60	74	48	40	58	36	30	35	21	18	32	11	11		
7	39	38	35	31	27	40	38	36	34	29	41	39	37	35	30	130	96	80	92	66	54	72	48	40	44	28	24	38	12	12		
8	39	38	35	31	27	40	38	36	34	29	41	39	37	35	30	130	96	80	92	66	54	72	48	40	44	28	24	38	12	12		
9	41	40	36	32	28	42	40	37	35	30	43	41	39	37	32	130	96	80	92	66	54	72	48	40	44	28	24	38	12	12		
10	43	42	38	33	28	40	42	39	35	30	46	44	40	37	32	160	120	100	120	80	70	90	60	50	55	35	30	45	14	15		
12	44	43	39	34	29	45	43	39	35	30	47	45	40	37	32	160	120	100	120	80	70	90	60	50	55	35	30	45	14	15		
15	45	44	40	35	30	46	44	41	36	31	48	46	42	38	33	210	150	120	150	100	85	110	78	60	65	46	35	52	18	18		
17	46	44	40	35	30	47	45	41	36	31	49	47	42	38	33	210	150	120	150	100	85	110	78	60	65	46	35	52	25	25		
20	47	45	41	36	31	48	46	42	38	33	50	48	43	39	34	260	190	150	180	125	100	130	100	75	80	60	45	60	25	25		
25	48	46	42	38	34	49	47	43	40	36	51	49	44	41	37	260	190	150	180	125	100	130	100	75	80	60	45	60	30	32		
30	49	47	43	39	35	50	48	44	41	37	52	50	45	42	38	300	240	190	200	150	130	150	120	100	90	75	60	70	35	40		
35	51	49	45	41	37	52	50	46	43	39	54	52	47	44	40	300	240	190	200	150	130	150	120	100	90	75	60	70	42	45		
40	53	51	46	42	38	54	52	47	44	40	56	54	49	45	41	360	300	260	240	180	160	180	150	130	110	90	80	82	50	50		
45	55	53	48	45	42	56	54	49	46	43	58	56	51	47	44	360	300	260	240	180	160	180	150	130	110	90	80	82	60	60		
50	57	54	50	47	44	58	55	51	48	45	60	57	53	49	46	420	320	320	280	200	200	210	160	160	125	100	100	95	70	70		

## Single Row Deep Groove Ball Bearings



Item Bearing No.	ID MM	Dimensions OD MM	WIDTH MM
6800	10	19	5
6900	10	22	6
6000	10	26	8
16100	10	28	8
6200	10	30	9
6300	10	35	11
6801	12	21	5
6901	12	24	6
16001	12	28	7
6001	12	26	8
16101	12	30	8
6201	12	32	10
6301	12	37	12
6802	15	24	5
6902	15	28	7
16002	15	32	8
6002	15	32	9
6202	15	32	11
6302	15	42	13
6803	17	26	5
6903	17	30	7
16003	17	35	8
6003	17	35	10
6203	17	40	12
6303	17	42	14
6403	17	62	17
6804	20	32	7
6904	20	37	9
16004	20	42	8
6004	20	42	12
6204	20	47	14
6304	20	52	15
6404	20	72	19
6805	25	37	7
6905	25	42	9
16005	25	47	8
6005	25	47	12
6205	25	52	15
6305	25	62	17
6405	25	80	21
6806	30	42	7
6906	30	47	9
16006	30	55	9
6006	30	55	13
6206	30	62	16
6306	30	72	19
6406	30	90	23
6807	35	47	7
6907	35	55	10

Item Bearing No.	ID MM	Dimensions OD MM	WIDTH MM
16007	35	62	9
6007	35	62	14
6207	35	72	17
6307	35	80	21
6407	35	100	25
6808	40	52	7
6908	40	62	12
16008	40	68	9
6008	40	68	15
6208	40	80	18
6308	40	90	23
6408	40	110	27
6809	45	58	7
6909	45	68	40
16009	45	75	10
6009	45	75	16
6209	45	85	19
6309	45	100	25
6409	45	120	29
6810	50	65	7
6910	50	72	12
16010	50	80	10
6010	50	80	16
6210	50	90	20
6310	50	110	27
6410	50	130	31
6811	55	72	9
6911	55	80	13
16011	55	90	11
6011	55	90	18
6211	55	100	21
6311	55	120	29
6411	55	140	33
6812	60	78	10
6912	60	85	13
16012	60	95	11
6012	60	95	18
6212	60	110	22
6312	60	130	31
6412	60	150	35
6813	65	85	10
6913	65	90	13
16013	65	100	11
6013	65	100	18
6213	65	120	23
6313	65	140	33
6413	65	160	37
6814	70	90	10
6914	70	100	16

Item Bearing No.	ID MM	Dimensions OD MM	WIDTH MM
16014	70	110	13
6014	70	110	20
6214	70	125	24
6314	70	150	35
6414	70	180	42
6815	75	95	10
6915	75	105	16
16015	75	115	13
6015	75	115	20
6215	75	130	25
6315	75	160	37
6415	75	190	45
6816	80	100	10
6916	80	110	16
16016	80	125	14
6016	80	125	22
6216	80	140	26
6316	80	170	39
6416	80	200	48
6817	85	110	13
6917	85	120	18
16017	85	130	14
6017	85	130	22
6217	85	150	28
6317	85	180	41
6417	85	210	52
6818	90	115	13
6918	90	125	18
16018	90	140	16
6018	90	140	24
6218	90	160	30
6318	90	190	43
6418	90	225	54
6819	95	120	13
6919	95	130	18
16019	95	145	16
6019	95	145	24
6219	95	170	32
6319	95	200	45
6419	95	240	55
6820	100	125	13
6920	100	140	20
16020	100	150	16
6020	100	150	24
6220	100	180	34
6320	100	215	47
6420	100	250	58

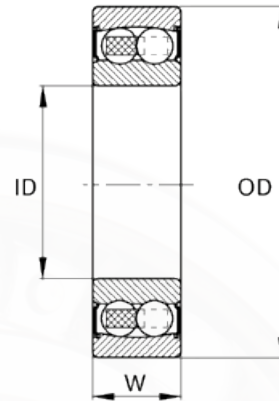
## MINIATURE SERIES

DIAMENTION	SIZE	NMB NUMBER
1X3X1	681	L-310
1X3X1.5	MR31	
1X4X1.6	691	
1.2X4X1.8	MR41X	
1.5X4X1.2	681X	R-415
1.5X4X2	681ZZ	
1.5X4X0.05	6812RS	
1.5X5X2	691X	
1.5X5X2.6	691ZZ	R-515
1.5X5X0.15	6912RS	
1.5X6X2.5	601X	
1.5X6X3	601ZZ	
1.5X6X0.15	6012RS	
2X5X1.5	682	
2X5X2.3	682ZZ	L-520
2X5X0.08	6822RS	
2X5X2	MR52	
2X5X2.5	MR52ZZ	
2X5X0.1	MR522RS	
2X6X2.3	692	R-620
2X6X3	692ZZ	
2X6X0.15	6922RS	
2X6X2.5	MR62	
2X6X2.5	MR62ZZ	
2X6X0.15	MR622RS	
2X7X2.5	MR72	
2X7X3	MR72ZZ	
2X7X0.15	MR722RS	
2X7X2.8	602	
2X7X3.5	602ZZ	
2X7X0.15	6022RS	
2.5X6X1.8	682X	L-625
2.5X6X2.6	682ZZ	
2.5X6X0.08	6822RS	
2.5X7X2.5	692	
2.5X7X3	692ZZ	
2.5X7X0.15	6922RS	
2.5X8X2.5	MR82	
2.5X8X0.2	MR822RS	
2.5X8X2.8	602X	R-825
2.5X8X4	602ZZ	
2.5X8X0.15	6022RS	
3X6X2	MR63	L-630
3X6X2.5	MR63ZZ	L-1063
3X6X0.1	MR632RS	
3X7X2	683	L-730
3X7X3	683ZZ	

DIAMENTION	SIZE	NMB NUMBER
3X7X0.1	6832RS	
3X8X2.5	MR83	R-830
3X8X3	MR83ZZ	
3X8X0.15	MR832RS	
3X8X3	693	
3X8X4	693ZZ	
3X8X0.15	6932RS	
3X9X2.5	MR93	
3X9X4	MR93ZZ	
3X9X0.2	MR932RS	
3X9X3	603	
3X9X5	603ZZ	930
3X9X0.15	6032RS	
3X10X4	623	EL 3 ZZ
3X10X4	623ZZ	
3X10X0.15	6232RS	
3X13X5	633	
3X13X5	633ZZ	
3X13X0.2	6332RS	
3.5X9X4	MR935ZZ	
3.5X10X4	MR1035ZZ	
4X7X2	MR74	L-740
4X7X2.5	MR74ZZ	
4X8X2	MR84	L-840
4X8X3	MR84ZZ	
4X8X0.15	MR842RS	
4X9X2.5	684	L-940
4X9X4	684ZZ	
4X9X0.1	6842RS	
4X10X3	MR104	1040
4X10X4	MR104ZZ	
4X10X0.2	MR 104 2RS	
4X11X4	694	
4X11X4	694ZZ	1140
4X11X0.15	6942RS	
4X12X4	604	
4X12X4	604ZZ	1240
4X12X0.2	6042RS	
4X13X5	624	EL 4 ZZ
4X13X5	624ZZ	
4X13X0.3	6242RS	
4X16X5	634	
4X16X5	634ZZ	1640
4X16X0.3	6342RS	
5X8X2	MF85	850
5X8X2.5	MR 85 ZZ	
5X9X3	MR 95 ZZ	950



## Double Row Self Aligning Ball Bearing

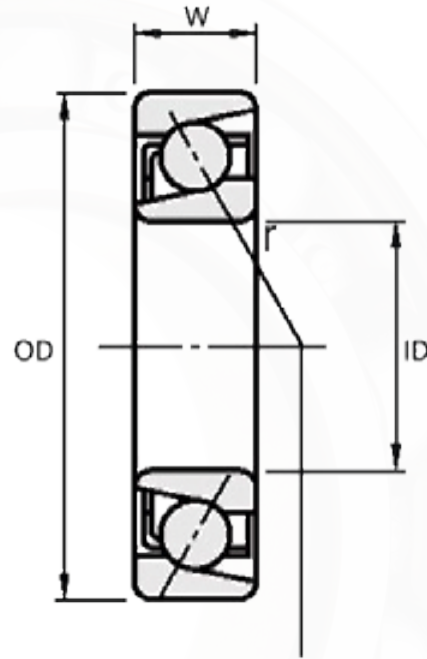


Item	Dimensions		
Bearing No.	ID MM	OD MM	WIDTH MM
135(13300)	5	19	6
126(13301)	6	19	6
127(13302)	7	22	7
108(13303)	8	22	7
129(13304)	9	26	8
10	10	26	8
1200	10	30	9
1300	10	35	11
2200	10	30	14
2300	10	35	17
1201	12	32	10
2201	12	32	14
1301	12	37	12
2301	12	37	17
1202	15	35	11
1302	15	42	13
2202	15	35	14
2302	15	42	17
1203	17	40	12
1303	17	47	14
2203	17	40	16
2303	17	47	19
1204	20	47	14
1304	20	52	15
2204	20	47	18
2304	20	52	21
1205	25	52	15
1305	25	62	17
2205	25	52	18
2305	25	62	24
1206	30	62	16
1306	30	72	19
2206	30	62	20
2306	30	72	27
1207	35	72	17
1307	35	80	21
2207	35	72	23
2307	35	80	31
1208	40	80	18
1308	40	90	25
2208	40	80	23
2308	40	90	33
1209	45	85	19
1309	45	100	25
2209	45	85	23
2309	45	100	36
1210	50	90	20
1310	50	110	27
2210	50	90	23

Item	Dimensions		
Bearing No.	ID MM	OD MM	WIDTH MM
2310	50	110	40
1211	55	100	21
1311	55	120	29
2211	55	100	25
2311	55	120	43
1212	60	110	22
1312	60	130	31
2212	60	110	28
2312	60	130	46
1213	65	120	23
1313	65	140	33
2213	65	120	31
2313	65	140	48
1214	70	125	24
1314	70	150	35
2214	70	125	31
2314	70	150	51
1215	75	130	25
1315	75	160	37
2215	75	130	31
2315	75	160	55
1216	80	140	26
1316	80	170	39
2216	80	140	33
2316	80	170	58
1217	85	150	28
1317	85	180	41
2217	85	150	36
2317	85	180	60
1218	90	160	30
1318	90	190	43
2318	90	190	64
1219	95	170	32
1319	95	200	45
2319	95	200	67
1220	100	180	34
1320	100	215	47
1321	105	225	49
1322	110	240	50

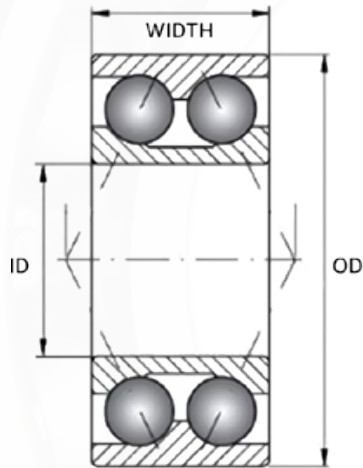
## Single Row Angular Contact Ball Bearings

Item	Dimensions		
Bearing No.	ID MM	OD MM	WIDTH MM
7200	10	30	9
7300	10	35	11
7201	12	32	10
7301	12	37	12
7202	15	35	11
7203	17	40	12
7303	17	40	12
7004	20	42	12
7204	20	47	14
7304	20	52	15
7005	25	47	12
7205	25	52	15
7305	25	62	17
7006	30	55	13
7206	30	62	16
7306	30	72	19
7007	35	62	14
7207	35	72	17
7307	35	80	21
7008	40	68	15
7208	40	80	18
7308	40	90	23
7009	45	75	16
7209	45	85	19
7309	45	100	25
7010	50	80	16
7210	50	90	20
7310	50	110	27
7011	55	90	18
7311	55	120	29
7211	55	100	21
7012	60	95	18
7312	60	130	31
7212	60	110	22
7013	65	100	18
7313	65	140	33
7213	65	120	23
7014	70	110	20
7314	70	150	35
7214	70	125	24
7015	75	115	20
7315	75	160	37
7215	75	130	25
7016	80	125	22
7316	80	170	39
7216	80	140	26
7017	85	130	22
7317	85	180	41
7217	85	150	28



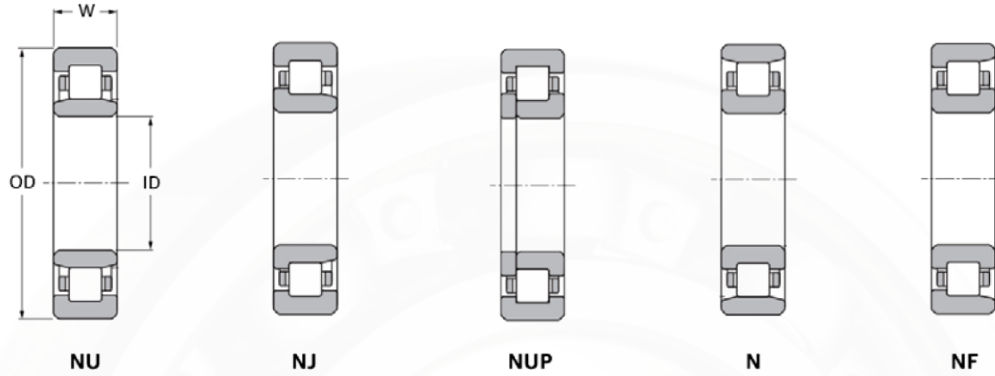
Item	Dimensions		
Bearing No.	ID MM	OD MM	WIDTH MM
7018	90	140	24
7318	90	190	43
7218	90	160	30
7019	95	145	24
7319	95	200	45
7219	95	170	32
7020	100	150	24
7320	100	215	47
7220	100	180	34

## Double Row Angular Contact Ball Bearings



Item	Dimensions		
	Bearing No.	ID MM	OD MM
3200	10	30	14
3300	10	35	19
3201	12	32	15.9
3301	12	37	19
3202	15	35	15.9
3302	15	42	19
3203	17	40	17.5
3303	17	47	22.2
3204	20	47	20.6
3304	20	52	22.2
3205	25	52	20.6
3305	25	62	25.4
3206	30	62	23.8
3306	30	72	30.2
3207	35	72	27
3307	35	80	34.9
3208	40	80	30.2
3308	40	90	36.5
3209	45	85	30.2
3309	45	100	39.7
3210	50	90	30.2
3310	50	110	44.4
3211	55	100	33.3
3311	55	120	49.2
3212	60	110	36.5
3312	60	130	54
3213	65	120	38.1
3313	65	140	58.7
3214	70	125	39.7
3314	70	150	63.5
3215	75	130	41.3
3315	75	160	68.3
3216	80	140	44.4
3316	80	170	68.3
3217	85	150	49.2
3317	85	180	73
3218	90	160	52.4
3318	90	190	73
3219	95	170	55.6
3319	95	200	77.8
3220	100	180	60.3
3320	100	215	77.8
3221	105	190	65.1
3321	105	225	87.3
3222	110	200	69.8
3322	110	240	92.1

## Single Row Cylindrical Roller Bearings



N	NU	NJ	NUP	SIZE	ID MM	OD MM	WIDTH MM
-	NU	NJ	-	202	15	35	11
N	NU	NJ	NUP	203	17	40	12
N	NU	NJ	NUP	204	20	47	14
N	NU	NJ	NUP	205	25	52	15
N	NU	NJ	NUP	206	30	62	16
N	NU	NJ	NUP	207	35	72	17
N	NU	NJ	NUP	208	40	80	18
N	NU	NJ	NUP	209	45	85	19
N	NU	NJ	NUP	210	50	90	20
N	NU	NJ	NUP	211	55	100	21
N	NU	NJ	NUP	212	60	110	22
N	NU	NJ	NUP	213	65	120	23
N	NU	NJ	NUP	214	70	125	24
N	NU	NJ	NUP	215	75	130	25
N	NU	NJ	NUP	216	80	140	26
N	NU	NJ	NUP	217	85	150	28
N	NU	NJ	NUP	218	90	160	30
N	NU	NJ	NUP	219	95	170	32
N	NU	NJ	NUP	220	100	180	34
N	NU	NJ	NUP	302	15	42	13
N	NU	NJ	NUP	303	17	47	14
N	NU	NJ	NUP	304	20	52	15
N	NU	NJ	NUP	305	25	62	17
N	NU	NJ	NUP	306	30	72	19
N	NU	NJ	NUP	307	35	80	21
N	NU	NJ	NUP	308	40	90	23
N	NU	NJ	NUP	309	45	100	25
N	NU	NJ	NUP	310	50	110	27
N	NU	NJ	NUP	311	55	120	29
N	NU	NJ	NUP	312	60	130	31
N	NU	NJ	NUP	313	65	140	33
N	NU	NJ	NUP	314	70	150	35
N	NU	NJ	NUP	315	75	160	37
N	NU	NJ	NUP	316	80	170	39
N	NU	NJ	NUP	317	85	180	41
N	NU	NJ	NUP	318	90	190	43
N	NU	NJ	NUP	319	95	200	45
N	NU	NJ	NUP	320	100	215	47

## Single Row Cylindrical Roller Bearings

N	NU	NJ	NUP	SIZE	ID MM	OD MM	WIDTH MM
-	NU	NJ	-	406	30	90	23
-	NU	NJ	NUP	407	35	100	25
-	NU	NJ	NUP	408	40	110	27
-	NU	NJ	NUP	409	45	120	29
-	NU	NJ	-	410	50	130	31
-	NU	NJ	NUP	411	55	140	33
-	NU	NJ	NUP	412	60	150	35
-	NU	NJ	-	413	65	160	37
-	NU	NJ	-	414	70	180	42
-	NU	NJ	-	415	75	190	45
-	NU	NJ	-	416	80	200	48
-	NU	NJ	-	417	85	210	52
-	NU	NJ	-	418	90	225	54
-	NU	NJ	-	419	95	240	55
-	NU	NJ	-	420	100	250	58
-	NU	-	-	421	105	260	60
-	NU	NJ	-	422	110	280	65
-	NU	NJ	-	424	120	310	72
-	NU	NJ	NUP	2203	17	40	16
-	NU	NJ	-	2204	20	47	18
-	NU	NJ	NUP	2205	25	52	18
N	NU	NJ	NUP	2206	30	62	20
N	NU	NJ	NUP	2207	35	72	23
N	NU	NJ	NUP	2208	40	80	23
N	NU	NJ	NUP	2209	45	85	23
-	NU	NJ	NUP	2210	50	90	23
N	NU	NJ	NUP	2211	55	100	25
N	NU	NJ	NUP	2212	60	110	28
-	NU	NJ	NUP	2213	65	120	31
-	NU	NJ	NUP	2214	70	125	31
-	nU	NJ	NUP	2215	75	130	31
-	NU	NJ	NUP	2216	80	140	33
-	NU	NJ	NUP	2217	85	150	36
-	NU	NJ	NUP	2218	90	160	30
N	NU	NJ	NUP	2219	95	170	43
-	NU	NJ	NUP	2220	100	180	46
-	NU	NJ	NUP	2304	20	52	21
-	NU	NJ	NUP	2305	25	62	24
-	NU	NJ	NUP	2306	30	72	27
-	NU	NJ	NUP	2307	35	80	31
-	NU	NJ	NUP	2308	40	90	33
-	NU	NJ	NUP	2309	45	100	36
-	NU	NJ	NUP	2310	50	110	40
-	NU	NJ	NUP	2311	55	120	43
-	NU	NJ	NUP	2312	60	130	46
-	NU	NJ	NUP	2313	65	140	48
-	NU	NJ	NUP	2314	70	150	51
-	NU	NJ	NUP	2315	75	160	55
-	NU	NJ	NUP	2316	80	170	58
-	NU	NJ	NUP	2317	85	180	60



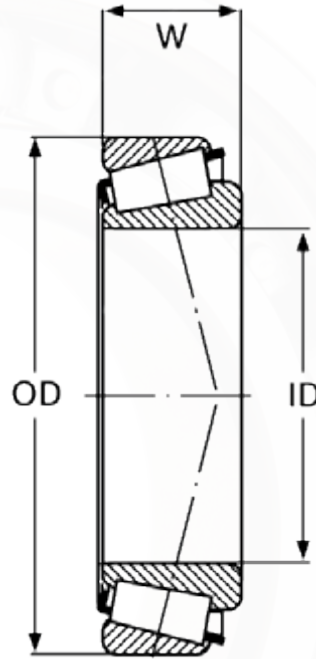
## Tapered Roller Bearings

Item	Dimensions		
Bearing No.	ID MM	OD MM	WIDTH MM
30302	15	42	14.25
30202	15	35	11.75
30303	17	47	15.25
30203	17	40	13.25
32303	17	47	20.25
32203	17	40	17.25
30304	20	52	16.25
30204	20	47	15.25
32304	20	52	22.25
32004	20	42	15
32204	20	47	19.25
30305	25	62	18.25
30205	25	65	16.25
32305	25	62	25.25
32005	25	47	15
30305	25	62	18.25
33005	25	47	17
32205	25	52	19.25
33205	25	52	22
30306	30	72	20.75
30206	30	62	17.25
32306	30	72	28.75
32006	30	55	17
33006	30	55	20
32206	30	62	21.25
33206	30	62	25
30306	30	72	20.75
30307	35	80	22.75
30207	35	71	18.25
32307	35	80	32.75
32007	35	62	18
33207	35	72	28
33007	35	62	21
32207	35	72	24.25
32907	35	55	14
30308	40	90	25.25
30208	40	80	19.75
32308	40	90	32.25
32008	40	68	19
32908	40	62	15
32208	40	80	24.75
33208	40	90	32
30309	45	100	27.25
30209	45	85	20.75
32309	45	100	38.25
32009	45	75	20
32909	45	68	15
33009	45	75	24
33109	45	80	26

Item	Dimensions		
Bearing No.	ID MM	OD MM	WIDTH MM
32209	45	85	24.75
30310	50	110	29.25
30210	50	90	21.75
32310	50	110	42.25
32010	50	80	20
32910	50	72	15
33010	50	80	24
33110	50	85	26
32210	50	90	24.75
33210	50	90	32
30311	55	120	31.5
30211	55	100	22.75
32311	55	120	45.5
32011	55	90	23
32911	55	80	17
33011	55	90	27
33111	55	90	30
32211	55	100	26.75
33211	55	100	35
30312	60	130	33.5
30212	60	110	23.75
32312	60	130	48.5
32012	60	95	23
32912	60	85	17
33012	60	95	27
33112	60	100	30
32212	60	110	29.75
33212	60	110	38
30313	65	140	36
30213	65	120	24.75
32313	65	140	51
32013X	65	100	23
30313D	65	140	36
32913	65	90	17
33013	65	100	27
33113	65	110	34
32213	65	120	32.75
33213	65	120	41
30314	70	150	38
30214	70	125	26.25
32314	70	150	54
32014X	70	110	25
30314D	70	150	38
32914	70	100	20
33014	70	110	31
33114	70	120	37
32214	70	125	33.25
33214	70	125	41
30315	75	160	40

## Tapered Roller Bearings

Item	Dimensions		
Bearing No.	ID MM	OD MM	WIDTH MM
30215	75	130	27.25
32315	75	160	58
32015X	75	115	25
30315D	75	160	40
32915	75	105	20
33015	75	115	31
33115	75	125	37
32215	75	130	33.25
33215	75	130	41
30316	80	170	42.5
30216	80	140	28.25
32316	80	170	61.5
32016X	80	125	29
30316D	80	170	42.5
32916	80	110	20
33116	80	130	37
32216	80	140	32.25
33216	80	140	46
30317	85	180	44.45
30217	85	150	30.5
32317	85	180	63.5
32017X	85	130	29
30317D	85	180	44.5
32917	85	120	23
33117	85	140	41
32217	85	150	38.5
33217	85	150	49
30318	90	190	46.5
30218	90	160	32.5
32318	90	190	67.5
32018X	90	140	32
30318D	90	190	46.5
32918	90	125	23
33118	90	150	45
33118	90	150	45
32218	90	160	42.5
30319	95	200	49.5
30219	95	170	34.5
32319	95	200	71.5
32019X	95	145	32
30319D	95	200	49.5
32919	95	130	23
32219	95	170	45.5
30320	100	215	51.5
30220	100	180	37
32320	100	215	77.5
32020X	100	150	32
30320D	100	215	56.5
32920	100	140	25



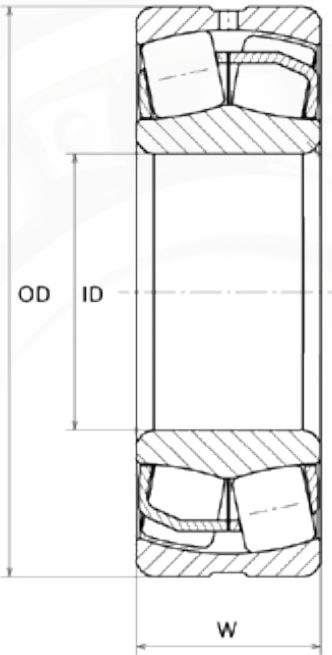
Item	Dimensions		
Bearing No.	ID MM	OD MM	WIDTH MM
30321	105	225	53.5
30221	105	190	39
32321	105	225	81.5
32021X	105	160	35
32921	105	145	25
32221	105	190	53
30322	110	240	54.5
30222	110	200	41
32322	110	240	84.5
32022X	110	170	38
32922	110	150	25
32222	110	200	56
30324	120	260	59.5
30224	120	215	43.5
32324	120	260	90.5
32024X	120	180	38
32924	120	165	29
32224	120	215	61.5

## Double Row Spherical Roller Bearings

Item	Dimensions		
Bearing No.	ID MM	OD MM	WIDTH MM
21304	20	52	15
22205	25	52	18
21305	25	62	17
22206	30	62	20
21306	30	72	19
22207	35	72	23
21307	35	80	21
22208	40	80	23
21308	40	90	23
22308	40	90	23
22209	45	85	23
21309	45	100	25
22309	45	100	36
22210	50	90	23
21310	50	11	27
22310	50	110	40
22211	55	100	25
21311	55	120	29
22311	55	120	43
22212	60	110	28
21312	60	130	31
22312	60	130	46
22213	65	120	31
21313	65	140	33
22313	65	140	48
22214	70	125	31
21314	70	150	35
22314	70	150	51
22215	75	130	31
21315	75	160	55
22315	75	160	55
22216	80	140	33
21316	80	170	39
22316	80	170	58
22217	85	150	36
21317	85	180	41
22317	85	180	60
22218	90	160	40
21318	90	190	43
23218	90	160	52.4
22318	90	190	64
22219	95	170	43
21319	95	200	45
22319	95	200	67

Item	Dimensions		
Bearing No.	ID MM	OD MM	WIDTH MM
22220	100	180	46
21320	100	215	47
23220	100	180	60.3
23120	100	165	52
22320	100	215	73
22222	110	200	53
23222	110	200	69.8
21322	110	240	50
24122	110	18	60
23122	110	180	56
23022	110	170	45
22322	110	240	80
22224	120	215	58
23224	120	215	76
24124	120	200	80
23124	120	200	62
23024	120	180	46
24024	120	180	60
22324	120	260	86
22226	130	230	64
23226	130	230	80
24126	130	210	80
23126	130	210	64
22326	130	280	93
23026	130	200	52
22228	140	250	68
23228	140	250	88
24128	140	225	85
23128	140	225	68
22328	140	300	102
23028	140	210	53
22230	150	270	73
23230	150	270	96
24130	150	250	106
23130	150	250	86
22330	150	320	105
23030	150	225	56
23022	110	170	45
23024	120	180	46
23026	130	200	52
23028	140	210	53
23030	150	225	56
23032	160	240	60
23034	170	260	67

## Double Row Spherical Roller Bearings



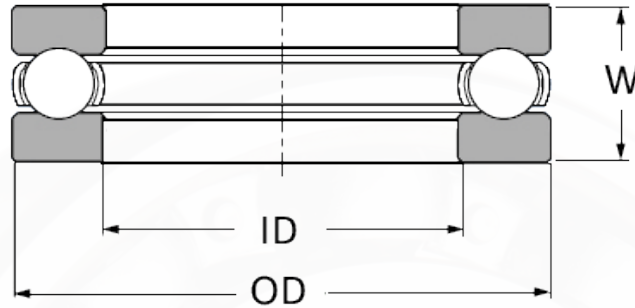
Item	Dimensions		
	Bearing No.	ID MM	OD MM
23036	180	280	74
23038	190	290	75
23040	200	310	82
23044	220	340	90
23048	240	360	92
23052	260	400	104
23056	280	420	106
23060	300	460	118
23064	320	480	121
23068	340	520	133
23072	360	540	134
23076	380	560	135
23080	400	600	148
23084	420	620	150
23088	440	650	157
23092	460	680	163
23096	480	700	165
230/500	500	720	167

## Single Thrust Ball Bearings

Item	Dimensions		
Bearing No.	ID MM	OD MM	WIDTH MM
51100	10	24	9
51200	10	20	11
51300	10	28	13
51101	12	26	9
51201	12	28	11
51301	12	32	14
51102	15	28	9
51202	15	32	12
51302	15	37	15
51103	17	30	9
51203	17	35	12
51303	17	40	16
51104	20	35	10
51204	20	40	14
51304	20	47	18
51404	20	50	21
51105	25	42	11
51205	25	47	15
51305	25	52	18
51405	25	60	24
51106	30	47	11
51206	30	52	16
51306	30	60	21
51406	30	70	28
51107	35	52	12
51207	35	62	18
51307	35	68	24
51407	35	80	32
51108	40	60	13
51208	40	68	19
51308	40	78	26
51408	40	90	36
51109	45	65	14
51209	45	73	20
51309	45	85	28
51409	45	100	39
51110	50	70	14
51210	50	78	22
51310	50	95	31
51111	55	78	16
51211	55	90	25
51311	55	105	35
51411	55	120	48
51112	60	85	17

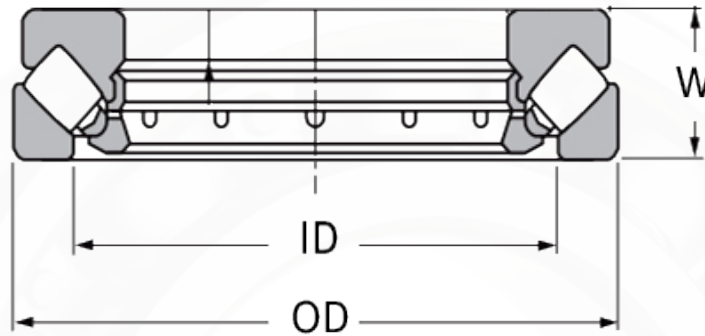
Item	Dimensions		
Bearing No.	ID MM	OD MM	WIDTH MM
51212	60	95	26
51312	60	110	35
51412	60	130	51
51113	65	90	18
51213	65	100	27
51313	65	115	36
51413	65	140	56
51114	70	98	18
51214	70	105	27
51314	70	125	40
51414	70	150	60
51115	75	100	19
51215	75	110	27
51315	75	135	44
51415	75	160	65
51116	80	105	19
51216	80	115	28
51316	80	140	44
51416	80	170	68
51117	85	110	19
51217	85	125	31
51317	85	150	49
51417	85	180	72
51118	90	120	22
51218	90	135	35
51318	90	155	50
51418	90	190	77
51120	100	135	25
51220	100	150	38
51320	100	170	55
51420	100	210	85
51122	110	145	25
51222	110	160	38
51322	110	190	63
51422	110	230	95
51124	120	155	25
51224	120	170	39
51324	120	210	70
51424	120	250	102
51126	130	170	30
51226	130	190	45
51326	130	225	75
51426	130	270	110
51128	140	180	31

## Single Thrust Ball Bearings



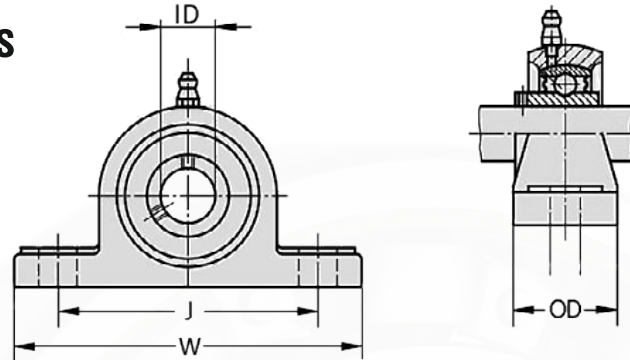
Item	Dimensions		
Bearing No.	ID MM	OD MM	WIDTH MM
51228	140	200	46
51328	140	240	80
51428	140	280	112
51130	150	190	31
51230	150	215	50
51330	150	250	80
51430	150	300	120
51132	160	200	31
51232	160	225	51
51332	160	270	87
51432	160	320	130
51134	170	215	34
51234	170	240	55
51334	170	280	87
51434	170	340	135
51136	180	225	34
51236	180	250	56
51336	180	300	95
51436	180	360	140
51138	190	240	37
51238	190	270	62
51338	190	320	105
51438	190	380	150
51140	200	250	37
51240	200	280	62
51340	200	340	110
51440	200	400	160
51144	220	270	37
51244	220	300	63
51148	240	300	45
51248	240	340	78
51152	260	320	45
51252	260	360	79
51156	280	350	53
51256	280	380	80
51160	300	380	62
51260	300	420	95
51164	320	400	63
51168	340	420	64
51172	360	440	65

## Spherical Roller Thrust Bearing



Item	Dimensions		
Bearing No.	ID MM	OD MM	WIDTH MM
29412	60	130	42
29413	65	140	45
29414	70	150	48
29415	75	160	51
29416	80	170	54
29417	85	180	58
29418	90	190	60
29420	100	210	67
29422	110	230	73
29424	120	250	78
29426	130	270	85
29428	140	280	85
29430	150	300	90
29432	160	320	95
29434	170	340	103
29436	180	360	109
29438	190	380	115
29440	200	400	122
29444	220	420	122
29448	240	440	122
29452	260	480	132
29456	280	520	145
29460	300	540	145
29464	320	580	155
29468	340	620	170
29472	360	640	170
29476	380	670	175
29480	400	710	185
29484	420	730	185
29488	440	780	206
29492	460	800	206
29496	480	850	224
294/500	500	870	224

## Pillow Blocks



Item	Dimensions			
Bearing No.	ID MM (Inch) (MM)	OD MM	J	WIDTH MM
UCP 202	(5/8)--15	57	96	125
UCP203	(11/16)--17	57	96	125
UCP 204	(3/4)--20	63.8	127	127
UCP 205	(7/8)(15/16 )(1)--25	69.5	105	140
UCP 206	(1-1/8)(1-3/16)(1-1/4)--30	82	121	160
UCP207	(1-1/4)(1-5/16)(1-3/8)35(1-7/16)--35	92	126	167
UCP 208	(1-1/2)(1-9/16)-- 40	98	136	180
UCP 209	(1-5/8)(1-11/16)(1-3/4)--- 45	105.5	146	189
UCP 210	(1-7/8)(1-15/16)--- 50	112.2	159	204
UCP 211	(2)(2-1/8)(2-3/16)---55	124.5	172	217
UCP 212	(2-1/4)(2-3/8)(2-7/16)---60	137	186	238
UCP 213	(2-1/2)--65	149	203	262
UCP 214	(2-3/4)---70	155	210	266
UCP 215	(3)--75	161.6	217	274
UCP 216	MM 80	174	232	292
UCP 217	(3-1/4)---85	186	247	310
UCP 218	(3-1/2)---90	198	262	326
UCP305	(7/8)(15/16)(1)---25	85	132	173
UCP 306	(1-1/8)(1-3/16)---30	95	140	180
UCP307	(1-1/4)(1-5/16)(1-3/8)---35	106	160	210
UCP 308	(1-1/2)(1-9/16)---40	116	170	218
UCP 309	(1-5/8)(1-11/16)(1-3/4)---45	129	190	244
UCP 310	(1-7/8)(1-15/16)---50	143	212	271
UCP 311	(2)(2-1/8)(2-3/16)---55	154	236	300
UCP 312	(2-1/14)(2-3/8)(2-7/16)---60	164	250	325
UCP 313	(2-1/2)---65	176	260	335
UCP 314	(2-3/4)---70	187	280	360
UCP 315	(3)---75	198	290	380
UCP 316	MM80	210	300	400
UCP 317	(3-1/4)---85	220	320	420
UCP 318	(3-1/2)---90	234	330	430
UCP 319	(3-3/4)---95	248	360	470
UCP 320	(4)---100	275	380	490
UCP 321	MM105	280	380	490
UCP 322	MM110	300	400	520
UCP 324	MM120	320	450	570
UCP 326	MM130	355	480	600
UCP 328	MM140	390	500	620

Dear Sir,

We appreciate all of your help over the previous 15 years in Global Trading.

We anticipate your continued support for global Impex in the future.

Our commitment to our valued distributors continues to be to provide good service, competitive pricing, and the highest quality for our sort of products. We look forward to continuing our mutually beneficial collaboration with your firm in the future.

Please feel free to contact us if you have any questions or need assistance. An opportunity to speak with you further about our new strategic collaboration would be greatly appreciated.

#### Our Contact Details

<b>For Account Department Order</b>	<b>+91 94289 57247</b>
<b>For Customer Service Account</b>	<b>+91 90544 10633</b>

Thanking you and would be delighted to hear from you and ever with our best wishes all the success.

Your very truly,

With regards,

**PANKAJ PATEL**  
**+91-9375610633**



**Head Office Address :-**

**B/45 & 46, Siddhi Industrial Park,  
Nr. Suprabhat Estate,  
Bardolpura Dariyapur-kazipur,  
Ahmedabad Gujarat, 380001**

